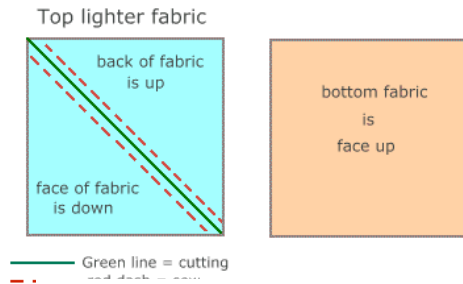


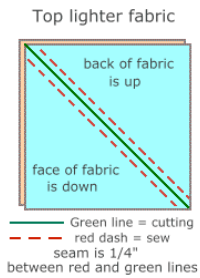
# How to Sew Half-Square Triangles

The squares go right sides together. The back of the lighter color square is uppermost. Using a ruler and a fine felt pen or a sharp pencil mark a line from one corner to the other diagonal corner as shown in green below. Don't worry about what kind of pen or pencil, this line won't show.

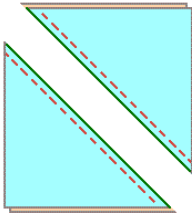
Sew with a quarter inch seam on each side of the drawn line. I like to use a 1/4" quilting foot. You also can mark the sewing line with a pencil if you wish.



Now you will cut along the green line using either a rotary cutter or scissors.



You will now have two pieces as shown below. Press these all open to form the half square triangles.



When you press them open you can trim off the little rabbit ear corners.

